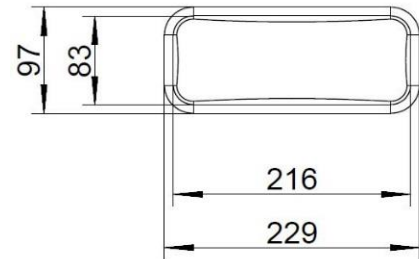
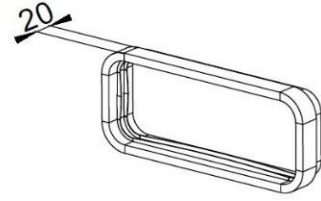
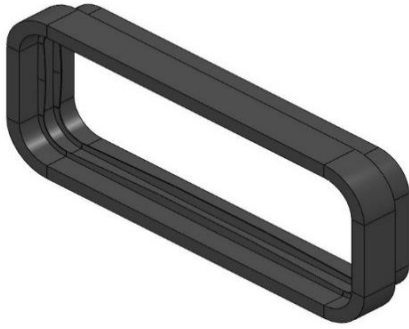


## SF-profile seal (4061027)



### Material properties:

Material: EPDM

Physical properties	Value	Unit
Hardness (at 23°C)	67 $\pm$ 2	Shore A
Relative density	1.43 $\pm$ 2	g/cm <sup>3</sup>
Tensile strength (min.)	$\geq$ 6.2	N/mm <sup>2</sup> (MPa)
Breaking strain	$\geq$ 270	%
Max. temp. application range	110	°C

### Composition:

- ✓ The product meets the requirements of REACH  
Reg. no. 1907/2006, version: 15.01.2019
- ✓ The product meets the requirements of ROHS  
Reg. 2011/65/EU, version: 17.09.2019

### Flammability:

- ✓ Needle flame test according to IEC 60695-11-5:2016 test  
report no.: 60224131-001
- ✓ Heat filament test according to EN/IEC 60695-2-11  
test report no.: 21290410-001
- ✓ UL 94 V-0 approvable (s=3mm  $\triangleq$  exposed area<sup>1</sup>)

### Compatibility:

SF profile seal can be adapted to SF-VRO flat duct pipes, SF-VRO flex flat duct pipes, as well as to the hood connection of the SF-150 pipe set for hob extractors

<sup>1</sup> Describes the external area of the seal which is not surrounded by metallic material.  
Test report UL Order 13010518 does not include certification.

