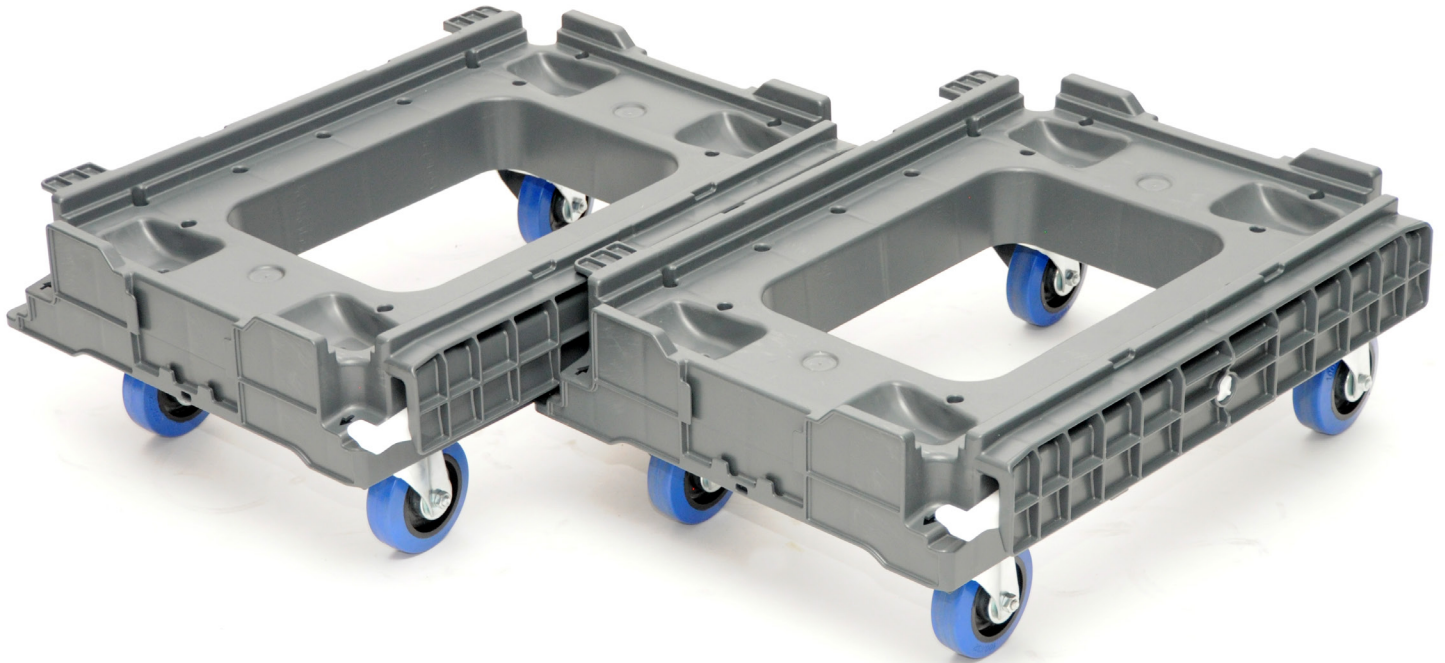


clever – creative – sustainable – smart



utz DOLLYFIX

*The new system for manual order preparation
Unit consisting of container, transport dolly and dolly with push bar*

utzgroup.com

Order preparation system

Ergonomic and easy to handle

Due to the ergonomics of its push bar and the robust connection between the transport dollies, the new DOLLYFIX preparation system enables simple handling, even in narrow storage aisles.

Flexible with regard to order size

In accordance with the number of containers required for the order, the connection of the dollies enables the adaptation of small and large volumes by using one dolly or 2 or 3 interconnected dollies.

Spatial optimisation

To limit the floor space, the containers of order units can be stacked using the integrated bail arms. In empty state, the containers can be nested and the dollies stacked on top of each other to save as much storage space as possible.

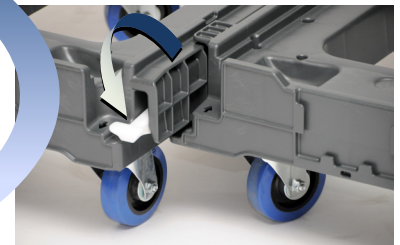
Preparation in containers

Connecting the dollies by pushing them together, then compiling the order into the containers.



Separating the dollies

By activating the foot pedal.



Storage before delivery

Order on one or two connected dollies.

Nestable container

Order no.:	45-6436-0
External dimensions:	600 x 400 x 366 mm
Internal dimensions:	545 x 345 x 347 mm
Stacking height:	360 mm
Nesting rate:	70%
Weight:	2.65 kg
Standard colour:	dark grey
Material:	UIC PP



Ergonomics and labeling

Handle slots on all sides.
Label areas on all four side walls.

Base geometry

Smooth and closed base with a large supporting surface for the goods.
Outside ribbed base and smooth walls for easy conveying on transport belts.



Connectable dollies

Order no.:	80-57-41A
External dimensions:	600 x 462 x 230 mm
Weight:	6.2 kg
Loading capacity:	up to 250 kg
Casters:	4 steering casters, Ø 100 mm, with solid rubber
Standard colour:	dark grey
Material:	UIC PP



Order no.:	80-57-T41H
External dimensions:	600 x 462 x 230 mm
Weight:	13.6 kg
Loading capacity:	up to 250 kg
Casters:	4 steering casters, 1 with brake, Ø 100 mm, with solid rubber
Standard colour:	dark grey
Material:	UIC PP
Push bar:	screw-type mounting



Separator accessible on both sides

To connect them, the dollies can be tele-scoped on their longitudinal sides. They can be separated by using the pedal accessi-ble on both sides.

Suitable for Euro standards

The base of the transport dollies features two levels and is therefore suitable for the nestable container 45-6436-0 and Euro standard stackable containers.

