







Not a regular job.

INDIVIDUAL CUSTOMER SOLUTIONS

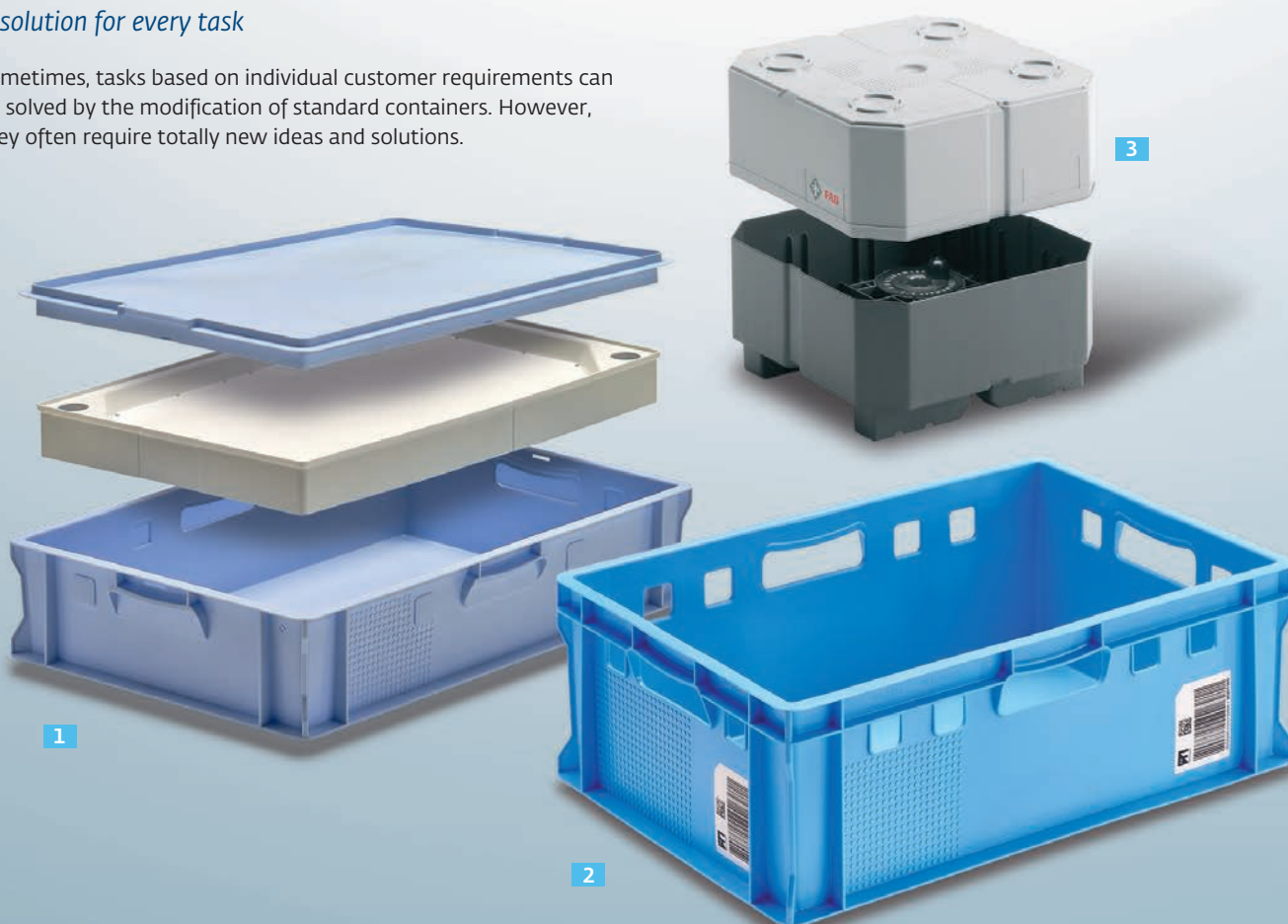
20 Individual customer solutions – Examples

The company	Individual customer solutions	Component holders	RAKO / Cases	EUROTEC	Small load carriers VDA	Space-saving containers	Pallets	Pallet boxes	Dollies	Products for food industry and catering	Specialised products	Conductive products ESD	Technical plastic parts	Accessories	General information
-------------	-------------------------------	-------------------	--------------	---------	-------------------------	-------------------------	---------	--------------	---------	---	----------------------	-------------------------	-------------------------	-------------	---------------------

# Not a regular job.

## A solution for every task

Sometimes, tasks based on individual customer requirements can be solved by the modification of standard containers. However, they often require totally new ideas and solutions.



1

### Fish container

This transport container for fish consists of three elements, an e-performance container, a plastic insert and a matching lid. After the fish is placed on the insert, the container is filled with ice. Melted water flows through appropriate openings into the cavities under the insert.



2

### E Performance meat container

This new meat container replaces the red container, used innumerable times on the market. E-Performance containers are available in three sizes 600 x 400 x 125 mm (E1), 600 x 400 x 200 mm (E2) and 600 x 400 x 300 mm (E3).

Four inmould labels with container identification and GS1 code permit the container's unique identity. The light blue colour guarantees that only new material is used for the production of this container.

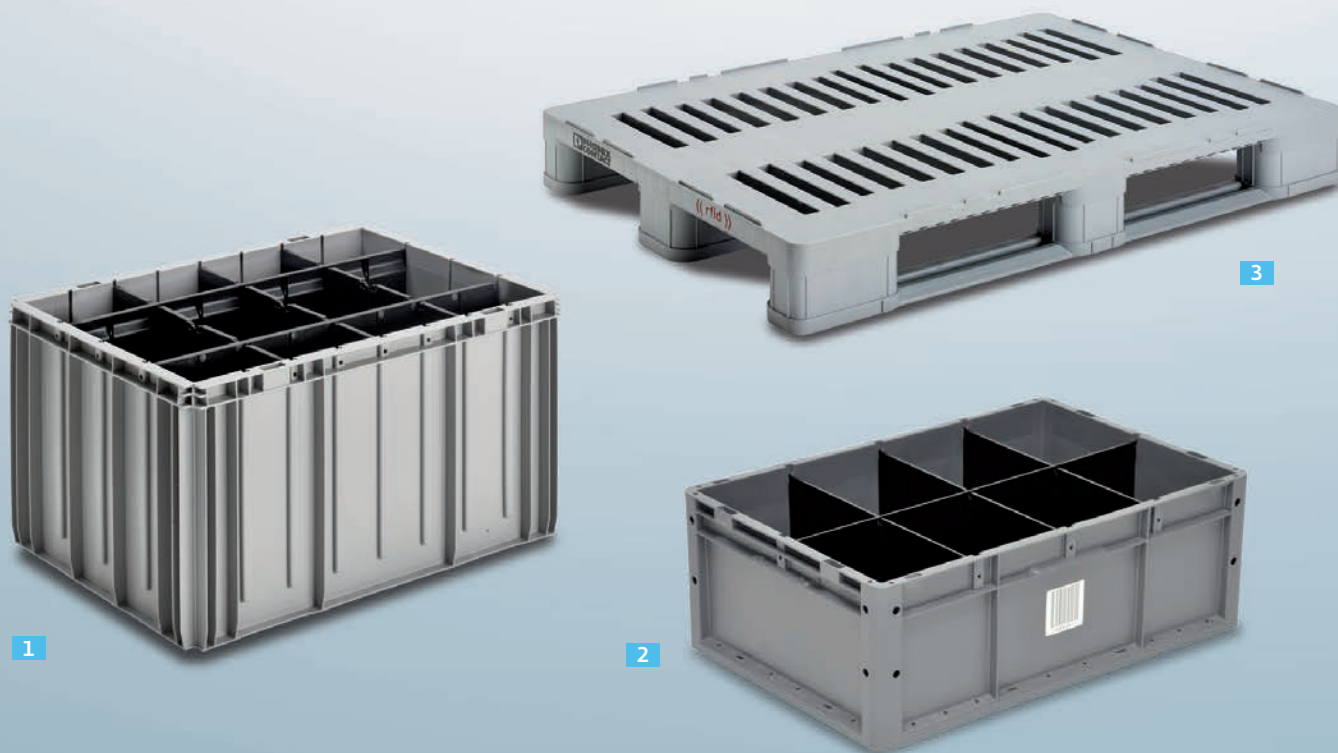
3

### Box for the transport of ball bearings

High-quality ball bearings of various sizes are transported in this re-usable container. Individually adjustable eccentric elements are used to fit the ball bearings securely into the container.







1

### *Autostore container with dividers*

Special containers offered by Autostore for an automated storage system with notches at the short and long walls for compartment dividers.

2

### *EUROTEC with dividers*

This EUROTEC 600 x 400 x 220 mm has grooves injected into the internal walls of the longitudinal sides, which are able to incorporate dividers, if necessary.

3

### *UPAL-V with RFID transponder*

A UPAL-V, comprised of individual components and replaceable in the event of repairs, was fitted with RFID transponders to identify the pallet.





1

### *EUROTEC and RL-KLT with retractable flap*

A retractable side wall was attached to the short side of a EUROTEC and an RL-KLT. This enables access to the container contents while stacked.

2

### *Layer Tray 800 x 1000 mm*

Trays are used when different packaging, usually consisting of cardboard, must be transported on automatic conveyor systems. The boxes are placed on the tray running on the conveyor system. If the tray is stored on a shelf, even the rear boxes can be pulled into the work area with a pushing device.

3

### *Container for gaskets*

This container is used to transport cylinder head gaskets for engines by inserting a base with holes into a RAKO. Steel pins matching the openings in the gaskets are inserted into the ground with the gaskets placed on top.

### *EUROTEC with retractable short side*

In this EUROTEC, the short side is connected to the floor by a lock spring with access. After opening the lock, the short side can be retracted through a guide in the upper rim of the long sides.



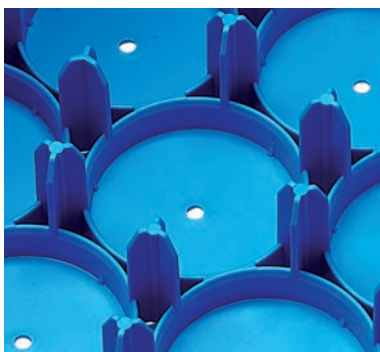




1

## Container for coffee pads

Tins mechanically filled with coffee pads are automatically inserted into the nests of this container. The tins are transported to the POS in the containers.



2

## Container with matching inserts for paternoster storage

These are thermoformed containers with matching dividers to assist in the sorting of small parts. The entire unit is placed on one level of the paternoster, making this container a genuine alternative to visible storage boxes.

3

## Engine frame

A simple solution for transporting cylinder heads to the assembly line: the parts are placed onto the free layer of the frame and locked with stoppers. The cylinder heads are removed at the assembly line and de-stacked layer by layer. The entire unit is placed on a UPAL-H ISO pallet.



DEUTSCHER  
VERPACKUNGS  
PREIS 2013





1

### *FixFlat module pallet*

Solar modules are attached to the FixFlat module pallet with clamping devices. The entire construction is used on flat roofs, especially when the roof's load capacity is so low that previous metal constructions could not be used for weight reasons.



2

### *Base boards for concrete blocks*

Fired concrete blocks are stored on this load carrier for cooling purposes. To ensure the appropriate stability, two pallet halves are welded together. The carrier plate consists of WPC (Wood Plastic Composite), a mixture of the renewable resource wood and PP.



3

### *"Glas Manager"*

These inserts developed for the catering industry are used to transport glasses. The entire unit is then cleaned in a dish-washing machine and can be inserted into a RAKO without having to remove the glasses. The "Glas Manager" is available in four grid widths. The height can be individually adjusted to the inserted glasses.







1

### *RAKO used for drilling tools*

This container transports vertically upright drills. The bottom part of the deep drawn insert is attached with a snap lock. The clear cover, height adjustable due to the grid, serves to protect the drills during removal.



2

### *Conveyor aid*

A special container, developed for a package distribution centre, with elastic mounting belts inside and barcode labels attached to both the exterior and interior walls.

3

### *KLAPA with workpiece carriers*

Workpiece carriers in a metal frame are inserted into a KLAPA Special. The workpiece carriers are used to transport assembly parts for the automotive industry. If parts are removed from one layer, the workpiece carrier can be folded up to allow access to the next, subjacent layer.