





Stability as the basis.

PALLETS

PALLETS

150	Stability as the basis.
151	A complete pallet range
154	UPAL-H
157	UPAL-U
158	UPAL-I
161	UPAL-S
162	UPAL-E
163	UPAL-H1
164	UPAL-V
165	UPAL-D
166	Stacking frames
168	Covers
169	Miscellaneous Accessories

Stability as the basis.

Plastic or wood?

Plastic pallets are not an economical alternative to wood pallets. Plastic pallets, however, have key advantages: they have a constant weight, are robust and durable, have a longer life than wooden pallets and, with metal reinforcing, are particularly sturdy and suitable for use in high-rack warehousing.

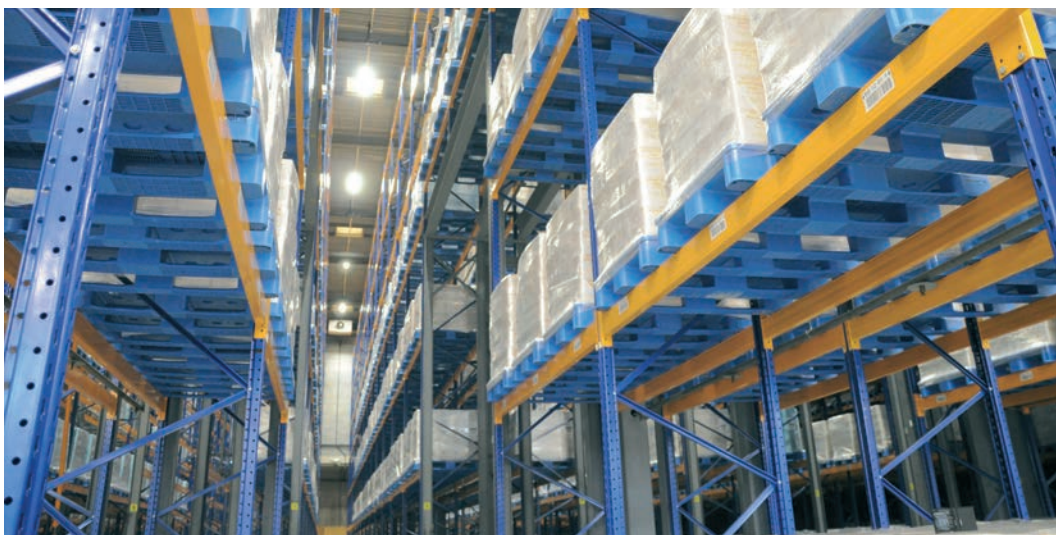
If desired, plastic pallets can be produced in a version which is electrically conductive or equipped with a non-slip top deck. Fully enclosed pallets are easy to clean and are particularly suitable for the food, hygiene and clean room sectors. Utz pallets (UPAL) are available as Euro, ISO or half pallets.



Which one is suitable for you?

The overview displays our extensive UPAL pallet range, sorted by size.

The next three pages describe the individual pallets.



Dimensions mm	Pallet	Undersurface		Upper deck												Reinforcement		
		runners	feet	smooth	closed	slotted	EH-compatibile safety edge	interrupted safety edge	continuous safety edge	recessed areas	middle arresting	anti-slip stripes	onboard safety edge	outboard safety edge	edge height 20 mm	none	metal tubes	steel profiles
800 x 600	UPAL-H	3		•	•											•		
		3			•			•		4			•			•		
		3			•		•						•			•		
800 x 600	UPAL-D	3		•	•											•		
		3		•		•										•		
		3			•			•					•			•		
		3		•	•			•					•			•		
800 x 600	UPAL-E	3				•			•					•		•		
1200 x 800	UPAL-H	3		•	•											•		
		3			•		•						•			•		
		3			•		•						•				•	
		3		•	•												•	
		3			•				•				•				•	
			9	•	•											•		
			9		•				•		•		•				•	
1200 x 800	UPAL-H1	3		•		•										•		
1200 x 800	UPAL-U	3		•	•											•		
		3			•		•						•			•		
		3		•	•												•	
		3			•		•						•				•	
1200 x 800	UPAL-I	3		•		•										•		
		3				•								•		•		
		3		•		•											•	
		3				•								•			•	
1200 x 800	UPAL-S	3		•		•										•		
		3				•		•					•			•		
		3				•			•				•		•	•		
		3		•	•							•				•		
		3			•			•				•	•			•		
		3			•				•				•		•	•		
		3		•	•							•	•				•	
		3			•			•				•	•				•	
		3			•				•				•		•		•	
		3		•	•							•	•		•		•	
1200 x 1000	UPAL-H	3		•	•											•		
		3			•		•						•			•		
		3		•	•								•				•	
		3			•		•										•	
			9	•	•											•		
			9	•	•												•	
1200 x 1000	UPAL-I	3		•		•										•		
		3				•		•						•		•		
		5		•		•										•		
		5				•		•						•		•		
		2	3	•		•							•			•		
		2	3			•		•					•			•		
		2	3			•			•				•			•		
		2	3			•			•				•		•	•		
			9	•		•										•		
		3		•		•											•	
1200 x 1000	UPAL-V	3				•		•						•	•			•
			9			•		•						•	•			•
		4				•		•						•	•			•

A comprehensive pallet programme

utz UPAL-H



Clean, stable and closed all round

UPAL-H is closed on all sides, is therefore easy to clean and frequently used in the food, hygiene and clean-room segment. Due to its reinforcement with metal profiles, the pallet is suitable for high-bay storage.

You can find UPAL-H on pages 154-156.

utz UPAL-U

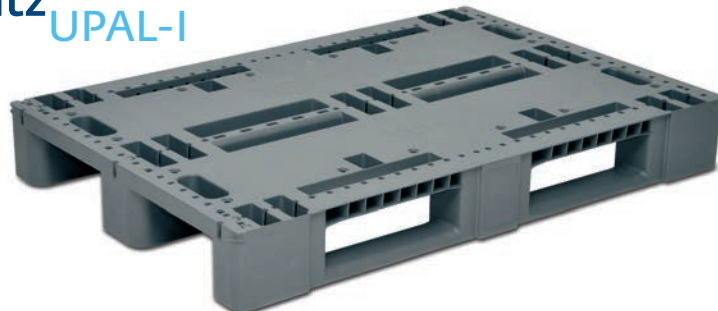


Robust, easy to handle and light

The UPAL-U is particularly quiet on roller tracks and is also suitable for high-bay storage due to its steel profiles. The pallet is relatively slight, so that it can also be easily carried by its two handles

You can find UPAL-U on page 157.

utz UPAL-I



Robust, resilient and versatile

The UPAL-I is a robust industrial pallet, which is particularly secure in handling and has a very long service life due to its robust construction. Metal profiles can be inserted, depending on requirement, making the pallet suitable for high-bay storage. To protect against slipping, anti-slip pins can be attached to the upper deck and the forklift contact area.

You can find UPAL-I on pages 158-160.

utz UPAL-S

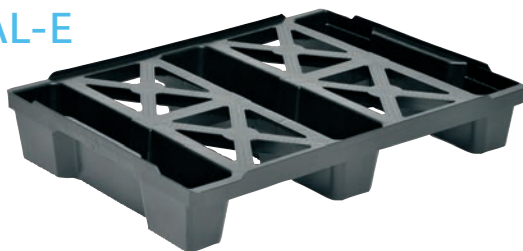


Clever, flexible and reinforced, therefore suitable for shelving

The UPAL-S is a robust and resilient pallet, with increased stability due to metal profiles, which can be inserted into designated recesses. This reinforcement makes the UPAL-S suitable for high-bay storage. The pallet can be equipped with anti-slip stripes.

You can find UPAL-S on page 161.

utz UPAL-E

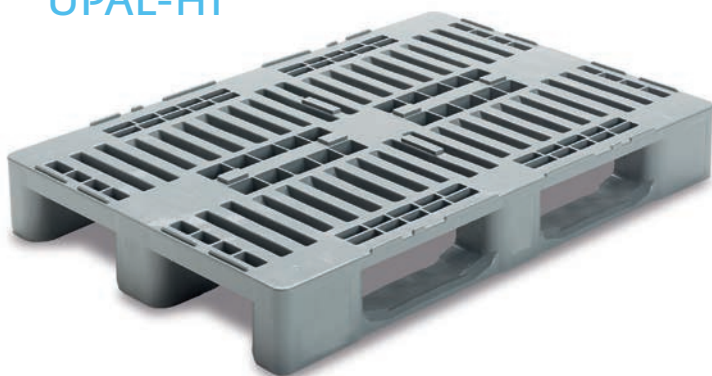


System-compatible, stackable and outsized

The advantages of the stackable export pallet UPAL-E are found in its suitability for use on automatic conveyor systems. It is therefore the perfect solution for smooth handling in intralogistics. The outsized semi-pallet offers a usable area of 800 x 600 mm or 1200 x 800 mm and studded fields, as well as a safety rim to secure the load.

You can find UPAL-E on page 162.

utz UPAL-H1



Easy to clean and stable

The UPAL-H1 is easy to clean and is therefore frequently used in the food, hygiene and cleanroom segment.

You can find UPAL-H1 on page 163.

utz UPAL-V



Variable, flexible and adaptable

The UPAL-V can be perfectly adapted to customer requirements: The modified number of feet, runners and metal reinforcements create an extensive versatility. Optional metal reinforcements provide the UPAL-V with the required stability and resilience. Additionally, the feet, runners and metal rods can be simply and easily replaced.

You can find UPAL-V on page 164.

utz UPAL-D



Small, easy to handle and versatile

The display pallet was designed especially for the food sector: Connector systems on the upper deck and on the sides are suitable for the insertion of display cartons. The light pallet is also suitable for manual forklifting from all four sides and can also be transported on automatic conveyor systems.

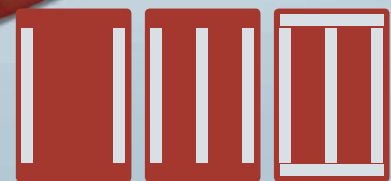
You can find UPAL-D on page 165.



UPAL-H Clean, sturdy and completely enclosed

The UPAL-H is completely enclosed, therefore it is easy to clean and is often used in the food, hygiene and clean room sectors.

With a reinforcement of metal tubes, the pallet is suitable for high-rack warehousing.



2 tubes

3 tubes

5 tubes

1 Runners

increase safety when transporting by forklift.

2 Internal ribbing

Internal ribbing provides the UPAL-H with additional stability.

3 Metal reinforcement

Inlaid metal tubes inserted in the pallets increase stability. The UPAL-H is therefore suitable for high rack warehousing.

The true hygienic pallet comes from Utz!

The University of Applied Sciences Wädenswil/Switzerland (Department of Foodstuffs Micro-biology)* has tested the UPAL-H along with some of the most frequently used competitive plastic pallets in an independent test to examine their hygienic quality. All plastic pallets made especially for the food and pharmaceutical industry (with flat and slotted surface) were inoculated at a number of defined points with 6 test micro-organisms (escherichia coli, saccharomyces cerevisiae, aspergillus niger, pseudomonas fluorescens, bacillus cereus spores and staphylococcus capitis) and then cleaned.

* The University of Applied Sciences Wädenswil/Switzerland is a member of the Zurich Association of Universities of Applied Sciences.

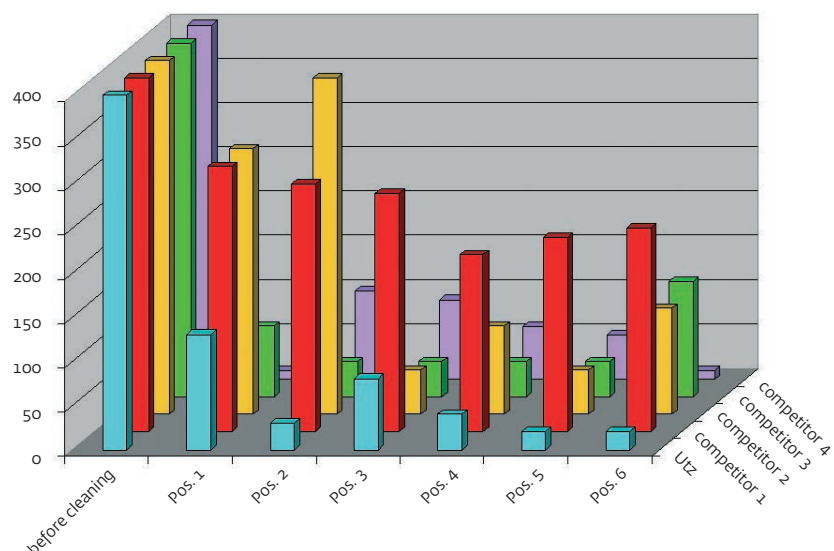
"The cleaning results show that the Utz hygiene pallet shows a better result in comparison with competitive products. This confirms the claim that the Utz UPAL-H is the recommended product for use in sensitive zones in the foodstuffs area".

(The analysis of the test results is with Georg Utz AG.)

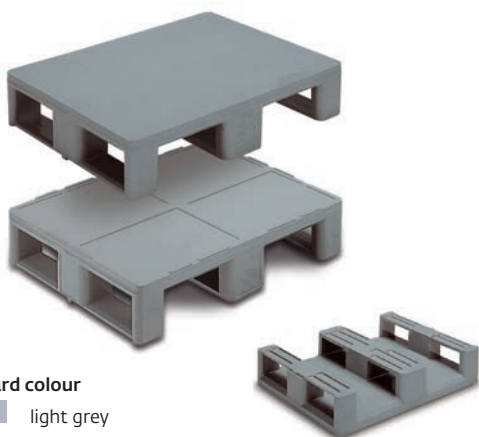
Cleaning effect

With some test germs there was a large degree of consistency in cleaning efficiency with the different hygiene pallets.

With three test germs, large variations were discernible after cleaning. Whereas many test germs were still present in some areas on the four competitive pallets, the Utz pallet exhibited significantly better sterilisation.



800 x 600 x 160 mm



Standard colour
light grey

3 runners crossways

Weight: 9.0 kg

Article code	Surface	Load bearing capacity* (at 23° room temperature)			
		static	dynamic	racked / support	
				on long sides	on short sides
33-8060-630	smooth	3000 kg	750 kg	500 kg	500 kg
33-8060-632	EHI-compatible safety edge ¹ , 4 recessed areas				
33-8060-636	EHI-compatible safety edge ¹ and EHI anti-skid top deck				
33-8060-642	EHI-compatible safety edge ¹				

1200 x 800 x 160 mm



Standard colours
red brown
dark grey
natural

3 runners lengthways

Weight: 15.5 kg

33-1208N-630-0000 R	smooth	6000 kg	1500 kg	500 kg	500 kg
33-1208N-630-0000	smooth				
33-1208N-642-0000 R	EHI-compatible safety edge ¹				
33-1208N-642-0000	EHI-compatible safety edge ¹				
33-1208N-643-0100 R	EHI-compatible safety edge ¹	6000 kg	1500 kg	500 kg	500 kg

Tare weight: 18.0 kg

3 runners lengthways
reinforced, 2 metal tubes lengthways

Weight: 17.0 kg

33-1208N-643-0200	EHI-compatible safety edge ¹	6000 kg	1500 kg	500 kg	750 kg
-------------------	---	---------	---------	--------	--------

3 runners lengthways
reinforced, 3 metal tubes lengthways

Weight: 17.5 kg

33-1208N-643-0300	EHI-compatible safety edge ¹	6000 kg	1500 kg	500 kg	850 kg
-------------------	---	---------	---------	--------	--------

3 runners lengthways
reinforced, 3 metal tubes lengthways and 2 metal tubes crossways

Weight: 18.5 kg

33-1208N-634-0500 R	smooth	7500 kg	1500 kg	1300 kg	1300 kg
33-1208N-635-0500 R	continuous safety edge ¹				
33-1208N-643-0500 R	EHI-compatible safety edge ¹				
33-1208N-643-0500	EHI-compatible safety edge ¹				

Tare weight: 21.0 kg

33-1208N-643-1500 R	EHI-compatible safety edge ¹	7500 kg	1500 kg	1300 kg	1300 kg
---------------------	---	---------	---------	---------	---------

* The load and the weight may vary depending on the number of tubes and their wall thickness. We recommend that you test the pallet before use.

¹ = onboard safety edge
R = from recycled material

Stock items (SKU), for all other items please request the minimum order quantities.

1200 x 800 x 160 mm



9 feet

Weight: 14.5 kg



9 feet

reinforced, 3 metal tubes lengthways
and 2 metal tubes crossways

Weight: 17.5 kg

1200 x 1000 x 160 mm



Weight: 22.5 kg

3 runners lengthways

3 runners lengthways

reinforced, 3 metal tubes lengthways
and 2 metal tubes crossways

Weight: 26.0 kg



Standard colours

	red brown
	natural



9 feet

Weight: 20.0 kg



9 feet

reinforced, 3 metal tubes lengthways
and 2 metal tubes crossways

Weight: 24.0 kg

Article code	Surface	Load bearing capacity* (at 23° room temperature)			
		static	dynamic	racked / support	
				on long sides	on short sides
33-1208N-600-0000 R	smooth	6000 kg	1500 kg	-	-
33-1208N-609-0500 R	continuous safety edge ¹ and middle arresting	7500 kg	1500 kg	1300 kg	1300 kg
33-1210-630 R	smooth	6000 kg	1500 kg	500 kg	500 kg
33-1210-642 R	EHI-compatible safety edge ¹				
33-1210-634 R	smooth	7500 kg	1500 kg	1300 kg	1300 kg
33-1210-643 R	EHI-compatible safety edge ¹				
33-1210-643	EHI-compatible safety edge ¹				
33-1210-600 R	smooth	6000 kg	1500 kg	-	-
33-1210-604 R	smooth	7500 kg	1500 kg	1300 kg	1300 kg

* The load and the weight may vary depending on the number of tubes and their wall thickness. We recommend that you test the pallet before use.

¹ = onboard safety edge
R = from recycled material

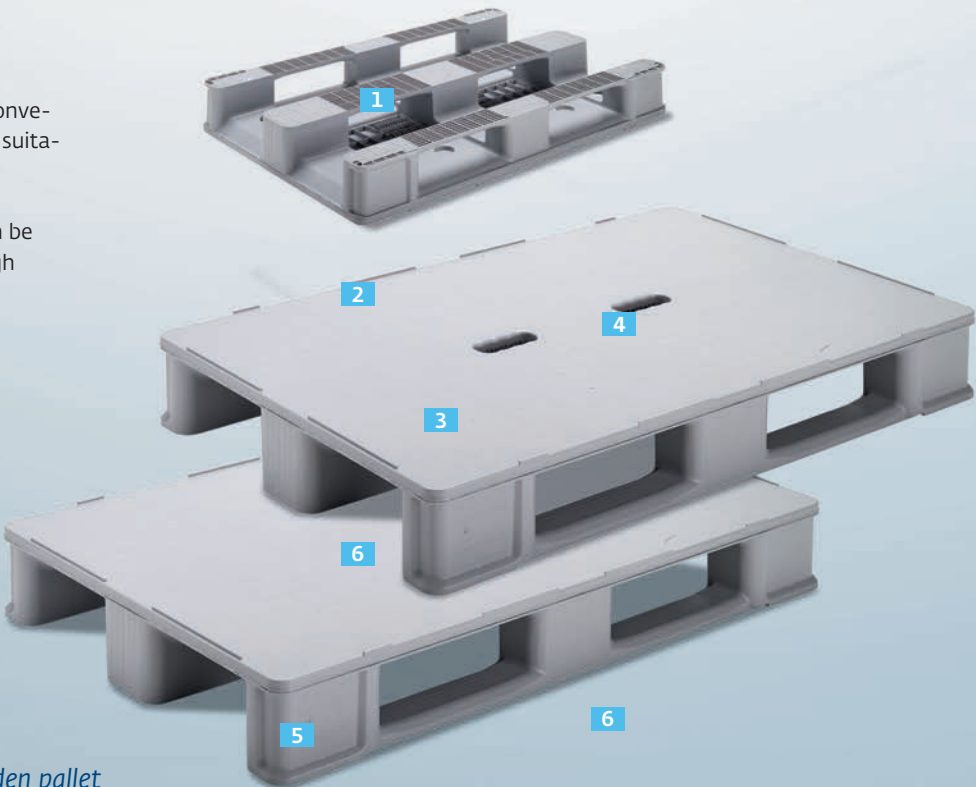
Stock items (SKU), for all other items please request the minimum order quantities.

UPAL-U
Robust, manageable and light

The UPAL-U is also especially quiet on conveyor belts and, with steel reinforcements, suitable for a high-rack warehouse.

The pallet is relatively light, so that it can be easily carried with the two reach-through handles.

- 1 Design with three runners
- 2 Upper deck with an interrupted safety edge
- 3 Smooth upper deck
- 4 Recessed grips
- 5 Height 150 mm, equal to wooden pallet



1200 x 800 x 150 mm



Standard colour
light grey

Note:
The UPAL-U can also be produced without reach-through handles.

* The load and the weight may vary depending on the number of tubes and their wall thickness. We recommend that you test the pallet before use.

¹ = onboard safety edge

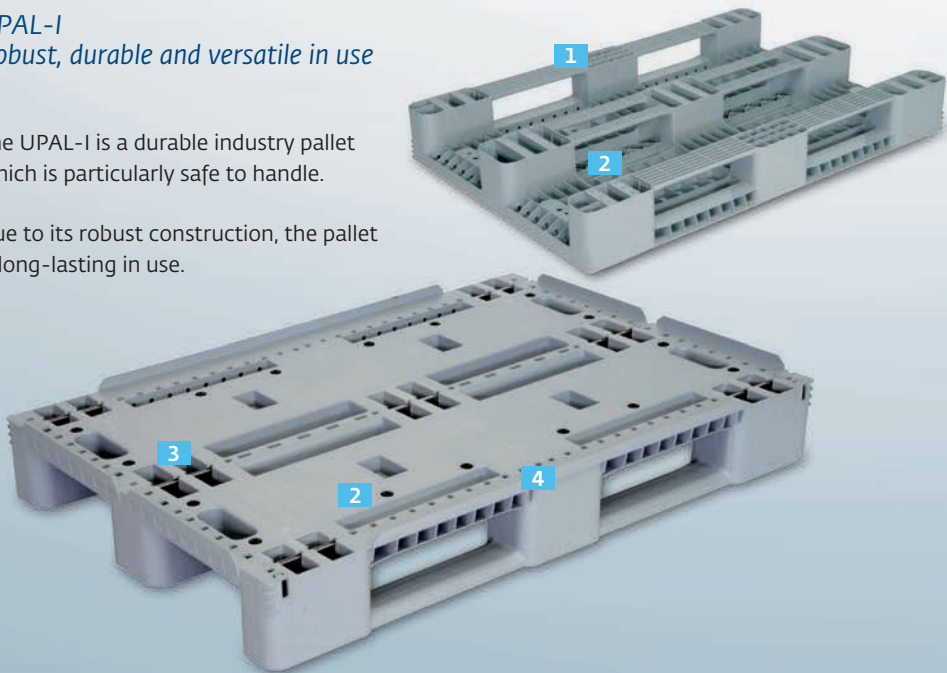
Article code	Surface	Load bearing capacity* (at 23° room temperature)			
		static	dynamic	racked / support	
				on long sides	on short sides
33-1208M-00-00	smooth	6000 kg	1500 kg	500 kg	500 kg
33-1208M-02-00	EHI-compatible safety edge ¹				
33-1208M-40-00	smooth	6000 kg	1500 kg	500 kg	1300 kg
33-1208M-42-00	EHI-compatible safety edge ¹				
33-1208M-60-00	smooth	6000 kg	1500 kg	1300 kg	1300 kg
33-1208M-62-00	EHI-compatible safety edge ¹				

Stock items (SKU), for all other items please request the minimum order quantities.

UPAL-I
Robust, durable and versatile in use

The UPAL-I is a durable industry pallet which is particularly safe to handle.

Due to its robust construction, the pallet is long-lasting in use.



2



3



4



1

Runners

Increase safety when transporting by forklift.

2

Anti-slip pins

The pins can be mounted subsequently to the upper

3

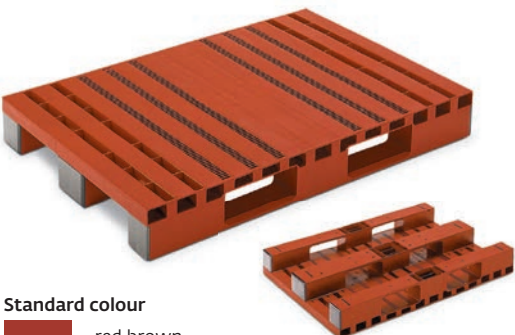
Reinforced version with metal tubes

deck and the undersurface forklift contact area.
Article code for one pin: 33-12081-950

4

Surface smooth or with outboard safety edge

1200 x 800 x 150 mm



Standard colour
red brown



3 runners lengthways

Weight:
18.0 kg

With non-slip coating on request.

Slip protection elements

Article code	Surface	Load bearing capacity* (at 23° room temperature)		
		static	dynamic	racked
33-604 R	smooth	4000 kg	1000 kg	500 kg

80-604-10/11	1 pair for right- and left-hand corners
--------------	---

* The load and the weight may vary depending on the number of tubes and their wall thickness. We recommend that you test the pallet before use.

R = from recycled material

Stock items (SKU), for all other items please request the minimum order quantities.

1200 x 800 x 150 mm



Standard colour
dark grey



3 runners lengthways

Weight: 11.0 kg

Article code	Surface	Load bearing capacity* (at 23° room temperature)			
		static	dynamic	racked / support	
				on long sides	on short sides
33-1208I-00-00 R	smooth	6000 kg	1500 kg	500 kg	500 kg
33-1208I-00-00-00	smooth				
33-1208I-01-00-00 R	outboard safety edge				
33-1208I-01-00-00	with outboard safety edge				

3 runners lengthways
reinforced, 3 metal tubes lengthways

Weight: 13.5 kg

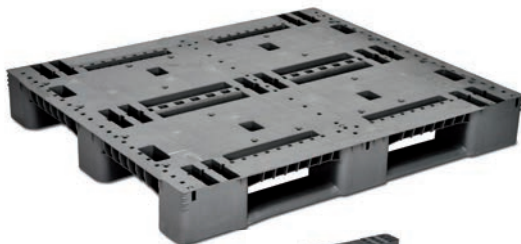
33-1208I-00-00-02 R	smooth	6000 kg	1500 kg	500 kg	1250 kg
33-1208I-01-00-02 R	outboard safety edge				

3 runners lengthways
reinforced, 3 metal tubes lengthways
and 2 metal tubes crossways

Weight: 14.6 kg

33-1208I-00-00-01 R	smooth	6000 kg	1500 kg	1250 kg	1250 kg
33-1208I-01-00-01 R	outboard safety edge				

1200 x 1000 x 150 mm



3 runners lengthways

Weight: 14.5 kg

33-1210I-02-00-00	smooth	5000 kg	1500 kg	500 kg	500 kg
33-1210I-03-00-00	outboard safety edge				

3 runners lengthways
reinforced, 4 metal tubes lengthways

Weight: 17.7 kg

33-1210I-02-00-02	smooth	5000 kg	1500 kg	1000 kg	500 kg
33-1210I-03-00-02	outboard safety edge				

3 runners lengthways
reinforced, 4 metal tubes lengthways
and 2 metal tubes crossways

Weight: 19.1 kg

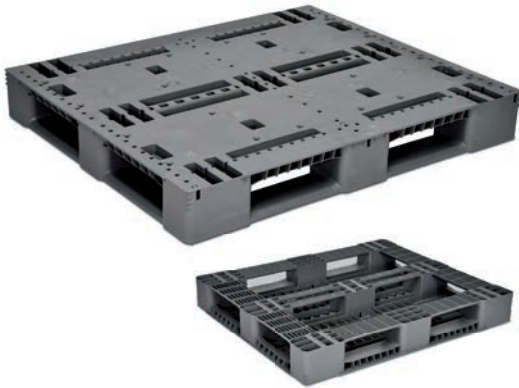
33-1210I-02-00-01	smooth	5000 kg	1500 kg	1000 kg	1000 kg
33-1210I-03-00-01	outboard safety edge				

* The load and the weight may vary depending on the number of tubes and their wall thickness. We recommend that you test the pallet before use.

R = from recycled material

Stock items (SKU), for all other items please request the minimum order quantities.

1200 x 1000 x 150 mm



*3 runners lengthways and
2 runners crossways*

Weight: 15.0 kg

Article code	Surface	Load bearing capacity* (at 23° room temperature)			
		static	dynamic	racked / support	
				on long sides	on short sides
33-1210I-00-00	smooth	5000 kg	1500 kg	500 kg	500 kg
33-1210I-01-00-00	outboard safety edge				

*3 runners lengthways and
2 runners crossways
reinforced, 4 metal tubes lengthways*

Weight: 18.2 kg

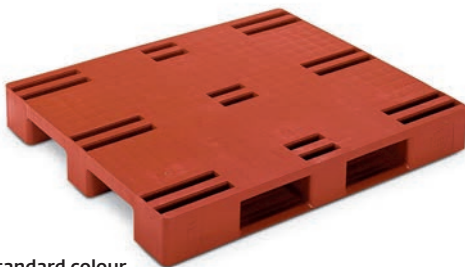
33-1210I-00-00-02	smooth	5000 kg	1500 kg	1000 kg	500 kg
33-1210I-01-00-02	outboard safety edge				

*3 runners lengthways and
2 runners crossways
reinforced, 4 metal tubes lengthways
and 2 metal tubes crossways*

Weight: 19.6 kg

33-1210I-00-00-01	smooth	5000 kg	1500 kg	1000 kg	1000 kg
33-1210I-01-00-01	outboard safety edge				

1200 x 1000 x 150 mm



Standard colour
red brown

*2 runners lengthways
and 3 feet*

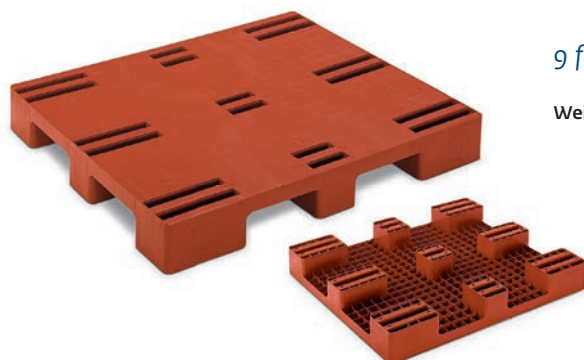
Weight: 17.3 kg

33-661 R	smooth	5000 kg	1000 kg	500 kg	500 kg
33-661-2 R	interrupted safety edge ¹				
33-661-3 R	continuous safety edge ²				
33-661-35 R	continuous safety edge 20 mm ² (weight 19 kg)				

9 feet

Weight: 17.2 kg

33-663 R	smooth	5000 kg	1000 kg	-	-
----------	--------	---------	---------	---	---



Smooth surface with
non-slip coating on
request.

* The load and the weight may vary depending on the number of tubes and their wall thickness. We recommend that you test the pallet before use.

¹ = onboard safety edge
² = outboard safety edge
R = from recycled material

Stock items (SKU), for all other items please request the minimum order quantities.

UPAL-S
Clever, flexible and reinforced -
suitable for shelf use

The UPAL-S is a robust and sturdy pallet; its stability is enhanced by metal tubes that can be inserted into the recesses provided. As a result of this reinforcement, the UPAL-S is suitable for high-rack warehousing.

If desired, the pallet can be equipped with a non-slip top deck.

1 Runners

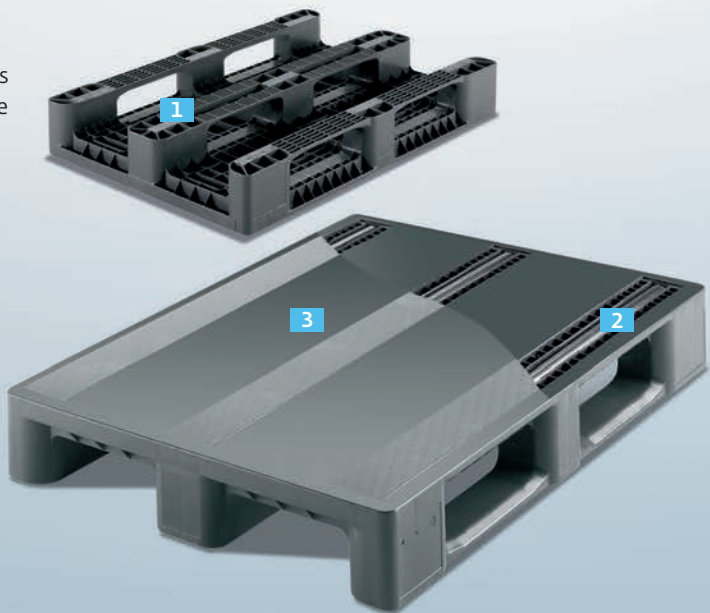
increase safety when transporting by forklift.

2 Metal reinforcement

Metal tubes increase the stability of the UPAL-S. As a result, the pallet is suitable for high-rack warehouses.

3 Upper deck versions

Increased load safety with upper deck versions.



1200 x 800 x 160 mm



3 runners
lengthways
surface open, with
water drainage holes

Weight: 14.0 kg



3 runners
lengthways
surface closed,
with anti-slip stripes

Weight: 16.0 kg



3 runners
lengthways
surface closed, rein-
forced, 3 metal tubes
lengthways, with
anti-slip stripes

Weight: 19.0 kg

* The load and the weight may vary depending on the number of tubes and their wall thickness. We recommend that you test the pallet before use.

¹ = onboard safety edge
R = from recycled material

Article code	Surface	Load bearing capacity* (at 23° room temperature)		
		static	dynamic	racked / support: on short sides
33-1208S-639-000 R	smooth	6000 kg	1500 kg	500 kg
33-1208S-739-000 R	interrupted safety edge ¹			
33-1208S-939-000 R	continuous safety edge 20 mm ¹			
33-1208S-630-110 R	smooth, with anti-slip stripes	6000 kg	1500 kg	500 kg
33-1208S-730-110 R	interrupted safety edge ¹			
33-1208S-930-110 R	continuous safety edge 20 mm ¹			
33-1208S-630-113 R	smooth, with anti-slip stripes	7500 kg	1500 kg	1250 kg
33-1208S-730-113 R	interrupted safety edge ¹			
33-1208S-930-113 R	continuous safety edge 20 mm ¹			

Nestable half-pallet for conveyor systems

The advantages of the stackable export pallet UPAL-E are found in its suitability for use on automatic conveyor systems. It is therefore the perfect solution for smooth handling in intralogistics. The outsized semi-pallet offers a usable area of 800 x 600 mm or 1200 x 800 mm and studded fields, as well as a safety rim to secure the load.

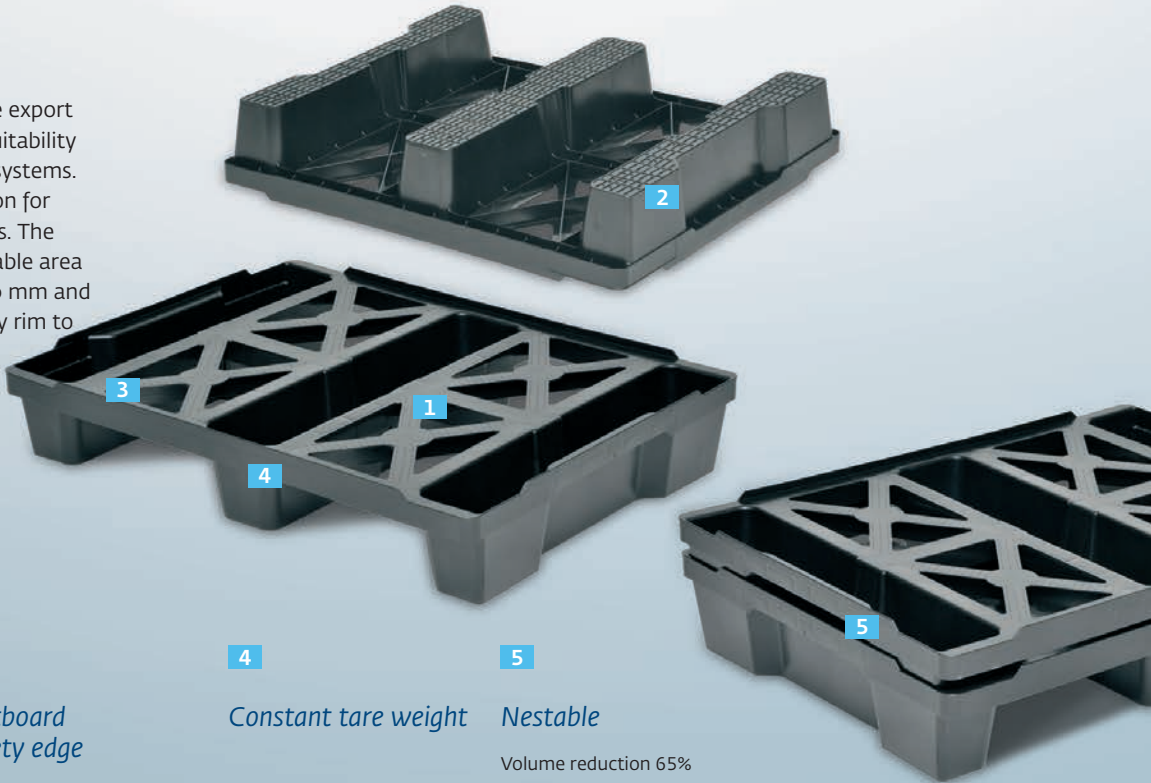
1
Upper deck with anti-slip fields

2
Runners
Designed for use on automatic conveyor systems

3
Outboard safety edge

4
Constant tare weight

5
Nestable
Volume reduction 65%



812 x 612 x 145 mm



Standard colour
black

3 runners crossways

Weight: 3.4 kg

Article code	Surface	Load bearing capacity* (at 23° room temperature)		
		static	dynamic	racked
33-8060B-0 R	slotted, safety edge 12 mm ²	400 kg	400 kg	0 kg
33-1208B-1	slotted, safety edge 18 mm ²	800 kg	400 kg	0 kg

1212 x 812 x 151 mm



3 runners lengthways

* The load and the weight may vary depending on the number of tubes and their wall thickness. We recommend that you test the pallet before use.

² = outboard safety edge
R = from recycled material

Stock items (SKU), for all other items please request the minimum order quantities.



UPAL-H1
Easy to clean and stable

The UPAL-H1 is easy to clean and is therefore frequently used in the food, hygiene and cleanroom segment.

1

Constant tare weight

2

Runners

increase safety when transporting by forklift.

3

Hygienic

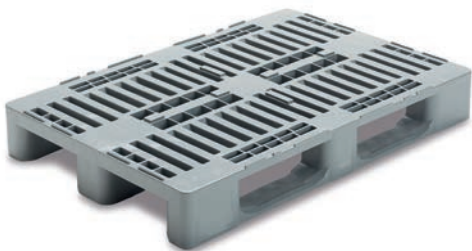
The hygiene pallet UPAL-H1 is easy to clean.

4

Food-safe

The pallet can also be used for direct contact with meat.

1200 x 800 x 160 mm



3 runners lengthways

Weight: 18.0 kg

Article code	Surface	Load bearing capacity* (at 23° room temperature)		
		static	dynamic	racked / support: on short sides
33-1208H-01-001-IV-18	interrupted safety edge ¹	5000 kg	1250 kg	1000 kg

* The load and the weight may vary depending on the number of tubes and their wall thickness. We recommend that you test the pallet before use.

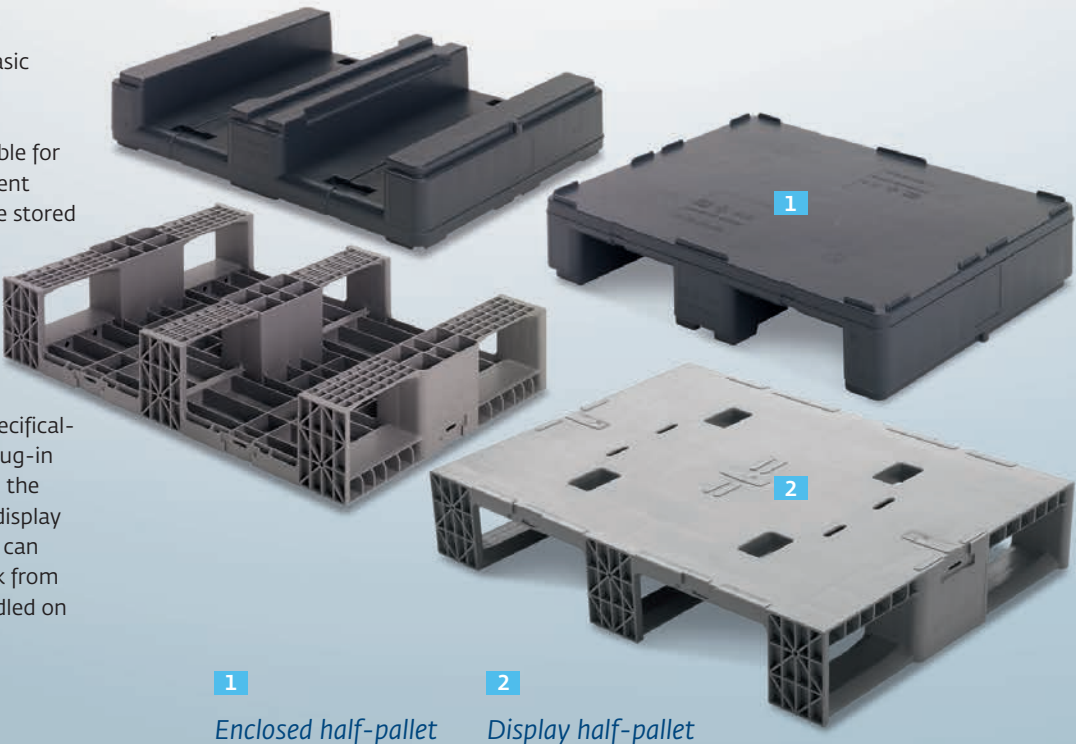
¹ = onboard safety edge

UPAL-D
Small, durable and versatile

UPAL-D are half-pallets with a basic measurement of 800 x 600 mm.

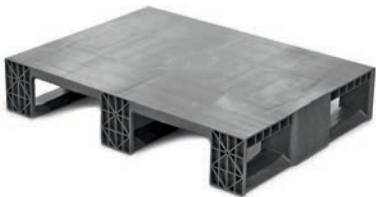
The fully enclosed version is suitable for universal use: containers of different designs and sizes can therefore be stored and transported on the pallet, as well as thermoformed work-piece carriers. Pallet management is considerably simplified as a result.

The display pallet version was specifically designed for the food sector: Plug-in devices on the upper deck and on the sides are suitable for plugging in display boxes. In addition, the light pallet can be rolled under with a pallet truck from all four sides and can also be handled on automatic conveyor systems.



1 Enclosed half-pallet 2 Display half-pallet

800 x 600 x 150 mm



Standard colour
light grey

3 runners crossways

Weight: 5.9 kg

Article code	Surface	Load bearing capacity* (at 23° room temperature)		
		static	dynamic	racked
33-8060M-0-01	smooth, closed	2000 kg	500 kg	400 kg
33-8060M-1-01	4 slots, recessed areas, interrupted safety edge ¹			
33-8060M-2-01	closed, interrupted safety edge ¹			
33-8060D-731-10-0	smooth, interrupted safety edge ¹	2000 kg	2000 kg	0 kg
33-8060D-731-12-0	smooth, interrupted safety edge ¹	2000 kg	2000 kg	500 kg

800 x 600 x 160 mm



3 runners crossways
reinforced, 2 metal tubes

Weight: 7.1 kg

3 runners crossways

Weight: 5.6 kg

* The load and the weight may vary depending on the number of tubes and their wall thickness. We recommend that you test the pallet before use.

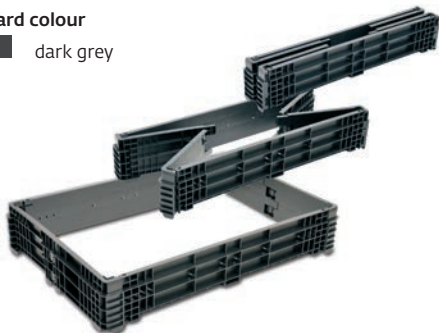
¹ = onboard safety edge

Stock items (SKU), for all other items please request the minimum order quantities.

Accessories – Stacking frames





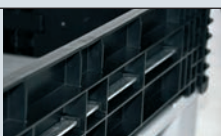
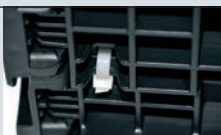
Standard colour
 dark grey



Stacking frame for plastic and wooden pallets
 1200 x 800 mm

External dimensions:
 1213 x 813 x 200 mm
Internal dimensions:
 1141 x 742 x 200 mm
Weight non-reinforced: 5.8 kg
Weight reinforced: 7.4 kg

Label holder

Article code	Version	
34-128-2000-00 R.1	non-reinforced	
	long sides reinforced with metal profile	
41-13-1	label holder with back plate	
26-2-0118	plate for labels, lettering, or with nobbed surface (250 x 150 mm)	
	metal profile for reinforcement of the longitudinal wall	
	Stacked top frames can be safely connected with a cable tie.	
40-1208	slip lid, to fit stacking frame 34-128-2000-00 R.1	
34-1280-2	the article code refers only to one frame half	

Lid
 1200 x 800 mm

Combination frame
 1200 x 800 mm

External dimensions:
 1200 x 800 x 390 mm
Internal dimensions:
 1150 x 750 x 372 mm
Weight: 7,2 kg

(R = from recycled material)

Stock items (SKU), for all other items please request the minimum order quantities.



*Stacking frame for pallets
euroframe and eurofold
1200 x 800 mm*

External dimensions:
1200 x 800 x 400 mm
Internal dimensions:
1150 x 750 x 400 mm
Weight: 10.0 kg

Article code	Version
58-1208-2	rigid, plastic corner profiles
58-1208	rigid, reinforced, plastic corner profiles
58-1208-1	foldable, plastic corner profiles
58-1208-0-101	rigid, INOX steel corner profiles

Lid

External dimensions:
1200 x 800 mm
Weight: 6.4 kg

Article code	Version
58-1208-3	loose lid



*Stacking frame for pallets
euroframe 800 x 600 mm*

External dimensions:
800 x 600 x 400 mm
Internal dimensions:
750 x 553 x 400 mm
Weight: 7.0 kg

Article code	Version
58-8060	rigid, plastic corner profiles
58-8060-0-101	rigid, INOX steel corner profiles

Adapter for pallets



*For plastic and
wooden pallets*

Article code	External dim.	Version
21-0600-3	812 x 612 mm	to fit UPAL-H 800 x 600 mm with smooth upper deck
20-2126	1210 x 810 mm	to fit UPAL-H 1200 x 800 mm with smooth upper deck

Utz pallets load safety:

Things can often slip on the smooth upper deck of a pallet. However, there is an anti-slip coating for our pallets:



Elastomeric coating

The elastomer coating on the top deck of the pallet consists of a 2-component polyurethane coating. Therefore, a rubber-like glossy surface with excellent non-slip properties is created.



Elastomer-coated strips

In this case, the elastomer coating is not applied over the entire surface, but distributed on two strips. An anti-slip effect is only possible, however, when the load is in contact with the elastomer strips.



Grip paint or silica sand

Grip paint and silica sand result in a fine, grainy texture on the top deck of the pallet. Therefore, the pallet maintains particularly good anti-slip properties.



Accessories – Covers

800 x 600 mm



Slip lid

Slip lid

Cover

Cover

Adapter lid

1200 x 800 mm



Cover

Cover

Cover

Cover



1200 x 1000 mm



Cover

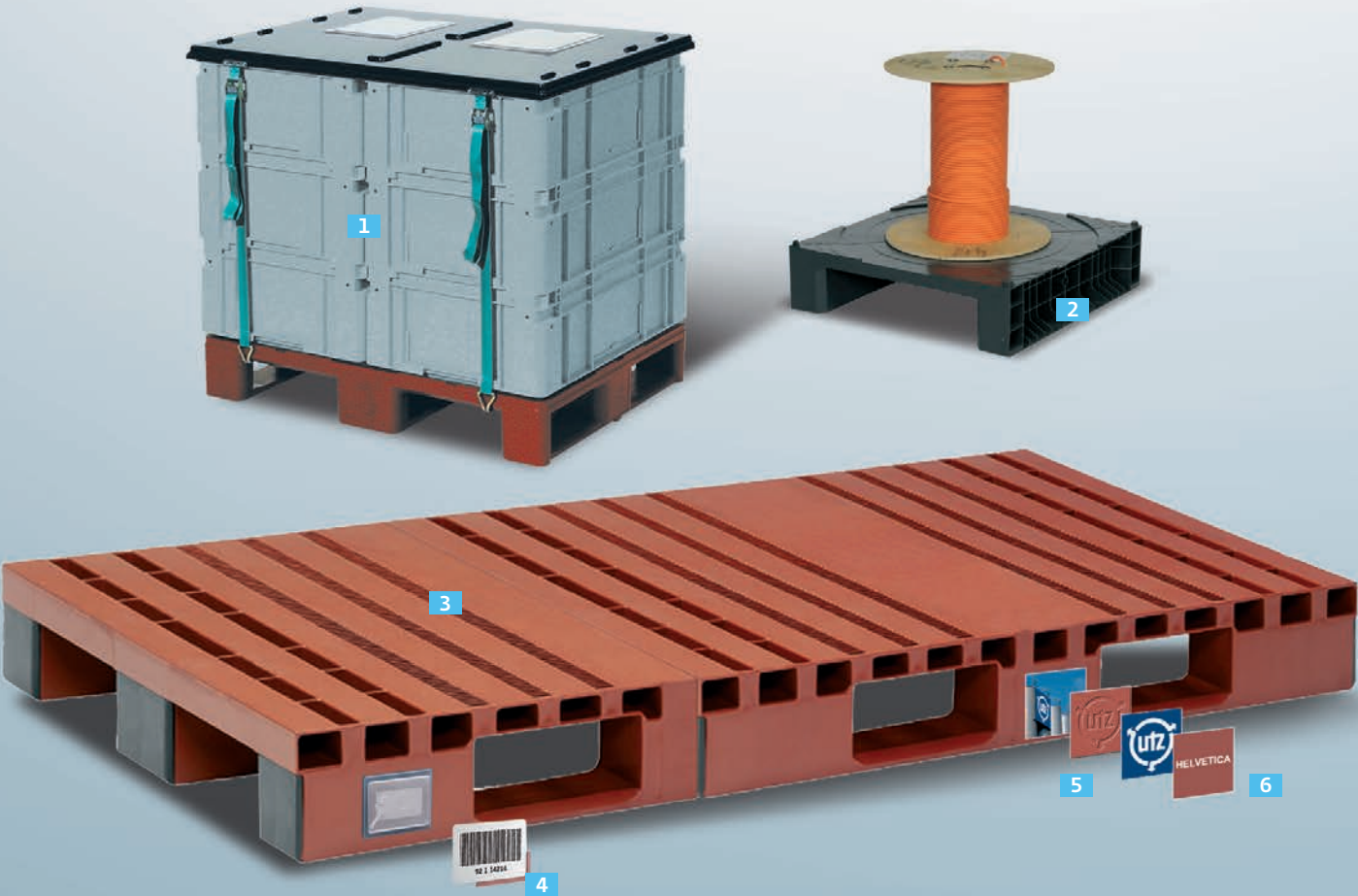
Cover

Standard colours

-  1) dark grey
-  2) black

Article code	External dim.	Remark	Standard colour
3-223U-0	810 x 610 mm		1
21-0600-3	812 x 612 mm		
20-2103-2	810 x 608 mm		2
102-8605	812 x 612 mm		
9-4074	810 x 620 mm	suitable for the fixing of tension belts	
20-0751	1227 x 817 mm	to fit UPAL-U, UPAL-H, UPAL-I	2
20-0751-2.1	1220 x 820 mm	with guide notches, to fit combination frame 34-1280-2	
21-8030 S	1223 x 820 mm	to fit UPAL-S	
21-8030 I		to fit UPAL-I	
21-8030 H		to fit UPAL-H	
20-2126	1210 x 810 mm	to fit UPAL-H	
40-1208	1204 x 808 mm	to fit UPAL-H	
20-2127-1	1210 x 1010 mm		
21-0780-1	1210 x 1010 mm	to fit UPAL-I, for VDA containers	

Stock items (SKU), for all other items please request the minimum order quantities.



1 Transport units

On request	There are covers in all required sizes for Utz pallets, as well as accessories for securing the entire load unit.
------------	---

2 Pallets with a special design

On request	At the request of the customer, pallets in special sizes and with individual upper deck versions can also be produced.
------------	--

3 Special sizes

On request	Connecting two pallets results in one and a half pallets or a double pallet.
------------	--

4 Identification

Can be positioned individually	Version barcode labels transponders / RFID inmould label
--------------------------------	--


5 Individual labelling

An individual version requires a template	Version hot stamping pad printing script inserts inmould labelling foil embossing
---	---

6 Hot-stamping

Standard font size	HELVETICA capital letters 14 mm / 30 mm
--------------------	---

Electrically conductive ESD

	see section "Electrically conductive products ESD"
---	--