





Get more value.

GENERAL ACCESSORIES

GENERAL ACCESSORIES

- 266 *Lids and overs*
- 267 *Closure and Protection*
- 268 *Dividers*
Removable boxes
Compartment trays
- 270 *Insulation inserts*
- 271 *Foam inserts*
- 272 *Label pockets*
Label holders
- 275 *Markings*

Get more value.

Finding products

The Utz range encompasses a large number of different lids, removabel boxes and other accessories, which fit several different container types. These items are listed here with reference to the page in the respective chapter.

If the product is not listed here, it can be found directly in the respective chapter.

Lids and covers



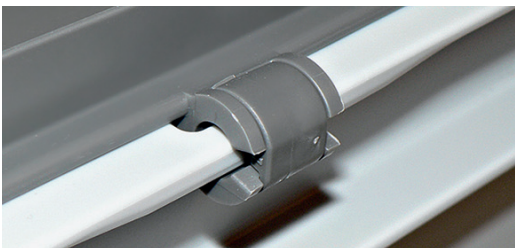
To fit	Dimension	See page
RAKO	200 x 150 mm	64
	300 x 200 mm	64
	400 x 300 mm	64
	400 x 400 mm	65
	600 x 400 mm	65
	800 x 600 mm	66
	1200 x 800 mm	66
	1200 x 1000 mm	66
RAKO ESD	all sizes	246
EUROTEC	200 x 150 mm	95
	300 x 200 mm	95
	400 x 300 mm	95
	600 x 400 mm	95
	800 x 600 mm	96
	1200 x 800 mm	96
	1200 x 1000 mm	96
Small Load Carriers VDA and GALIA	R-KLT	102
	RL-KLT	102, 103
	C-KLT	103
	Light-KLT	104
	Special KLT	105
	GALIA	106
	Medium Container	109
	Covers	111
SGL containers	all sizes	204
STANDARD	all sizes	206
Gastro-Norm trays	all sizes	213
Foldable boxes	600 x 400 mm	120
	800 x 600 mm	118
Collapsible boxes	600 x 400 mm	126
	800 x 600 mm	129
	1200 x 800 mm	129
Nestable container NESCO	all sizes	136
Covers for pallets	all sizes	168
Lids for pallet boxes	KLAPA	175-181
	PALOXE	183-184

Snap lock



To fit	See page
RAKO lids	65

Hinge reinforcement



RAKO lids	65
-----------	----

Seals



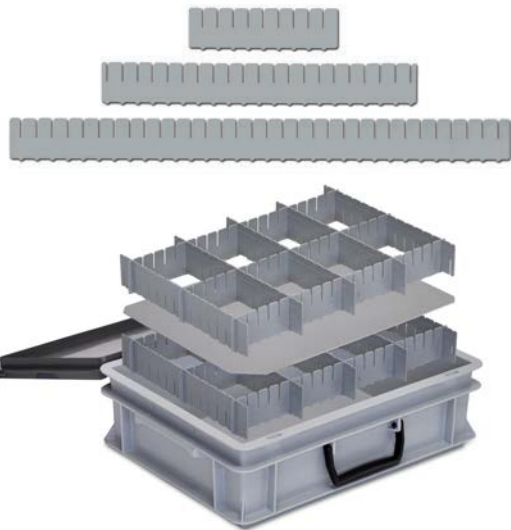
To fit	Model
Various containers	A clip or cable seal is used depending on the type of container or lid.
Various containers	Every container can be equipped with lock buckles or fabrics as required by the customer. Together with a foam insert, this results in reusable packaging which optimally protects its contents.

Fabric and retaining belts



Subdivision

Dividers and layer pads

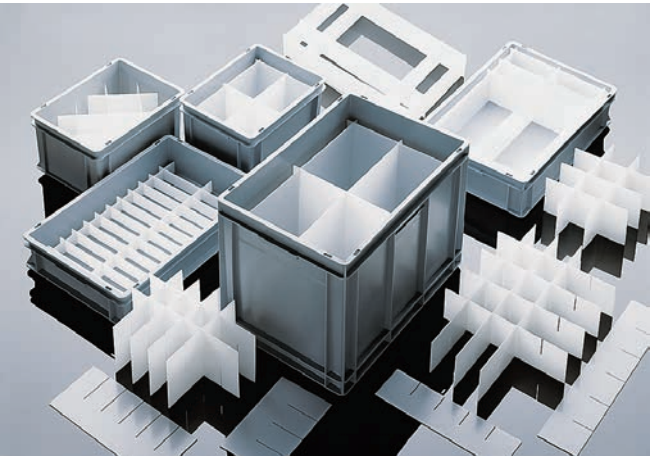


RAKO and
EUROTEC
containers



KLAPA
1200 x 800 mm

Individual subdivisions



To fit	Model	See page
to stick together		74
to stick together		176

Remark
Different divider versions can be manufactured upon request.

Removable boxes



RAKO

RAKO ESD


EUROTEC

Compartment trays



RAKO



To fit	Model	See page
RAKO RAKO ESD EUROTEC 		
	various sizes	70, 71
	various sizes	253 and 70, 71
	various sizes	93, 94
RAKO	various sizes	72

Subdivision

Dividers for glasses



Dividers for plates



Glas Manager

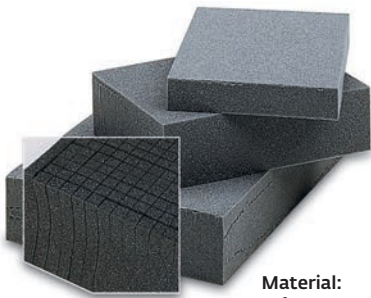


Insulation inserts



To fit	Model	See page
RAKO		
	various models	216
RAKO		
	various models	217
RAKO		
	various models	214, 215
POOLBOX		
	various models	224

Foam inserts



Material:
soft, PU HL 2551

RAKO and
EUROTEC
containers

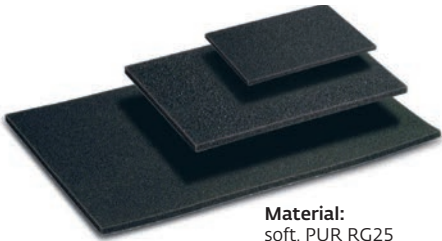


The foam inserts are pre-punched for individual assembly. The set consists of:
1 foam insert for the container
1 foam insert for the lid
5 adhesive spots



Material:
hard, PE Ethafoam 220

Foam inserts for lids



Material:
soft, PUR RG25

RAKO and
EUROTEC
containers

Individual foam inserts



Remark
Foam inserts consisting of various materials and forms can be manufactured upon request.

Marking / Identification

Label pockets



To weld on
Material: PP natural (transluscent), 1,5 mm



To rivet on
Material: PET-G transparent, 1,5 mm

Adhesive label pocket



Label pocket with reversible carrier plate



To fit	Model	See page
All containers		
	various models	75
All containers		
	various models	75
All containers		
	to stick	75
All containers		
	to weld on	75

Label clips



Containers with
ribs

All containers

Label clip part



All containers

Adhesive label



plastic-coated and
washable

All containers

To fit	Model	See page
Containers with ribs		
	to clip on	76
All containers		
	to rivet on	76
All containers		
	for subsequently welding	76
All containers		
	to stick on	76

Marking / Identification

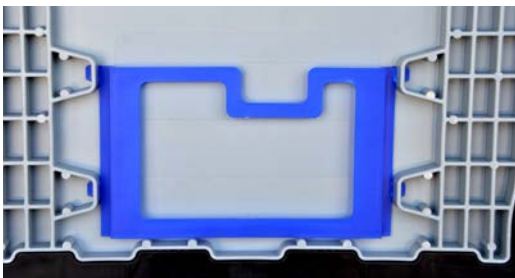
Special label holders



Small Load Carriers GALIA



Foldable boxes



Collapsible boxes



KLAPA



SILAFIX

To fit	Model	See page
<i>Small Load Carriers GALIA</i>		
	various models	107
<i>Foldable boxes</i>		
	various models	121
<i>Collapsible boxes</i>		
	standard model	129
<i>KLAPA</i>		
	various models	175-177
<i>SILAFIX</i>		
	paper label and protective foil	228, 229

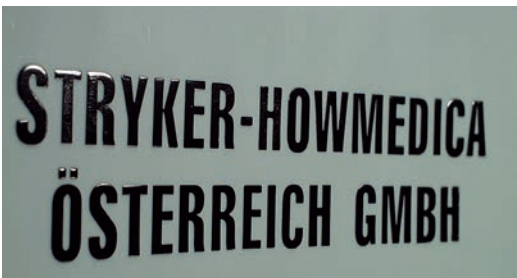
What do you want to express?

The individualisation of standards has become an increasingly debated subject. This could be an imprint or three-dimensional script of the logo, consecutive numbering or an RFID transponder to identify the container. We can do that too.

The production of a script, a pad or hot-stamping cliché requires vectorised, unscreened graphics files (eps, ai) with 1200 dpi or a 1:1 high-end PDF.



Hot stamping



	Characteristics
Custom-made hot stamping	For the permanent imprint of an individualised logo or text or as an alternative with standard letters in Helvetica font (capitals and numbers, 14 or 30 mm high).

Standard letters

Pad printing



Script insert



Barcode label



Inmould labelling



Characteristics

Pad printing permits the multi-coloured, washable imprint of delicate graphics and fonts.

Scripts are directly installed in the injection mould of the containers or pallets and injected with plastic during production.

To ensure that all containers already have a name before they are delivered to you, we also attach the matching barcode labels to the container upon request. Attached exactly where your logistics system needs them to be.

Permanent individualisation can also be achieved with inmould labelling. In this case a picture label is inserted into the injection mould and back-moulded with plastic. This creates a seamless, very tight connection between the label and the plastic. Inmould labelling frequently results in the adaptation of the injection mould.

Stickers



Adhesive label



RFID transponder



Characteristics

Depending on the required graphics (colour gradient), size (very large subjects or very fine elements) and position on the container, the best result is achieved by attaching a sticker. These are delivered to us and we attach them.

If labels have to be repeatedly adhered to and removed from the container, we recommend the use of our special adhesive labels. These are plastic-coated and washable. Adhered labels are easily removed without leaving residues behind.

Due to our special welding procedure, transponders can be attached to the external wall or in the double base of a container at a later stage and in air- or water-tight manner. In the case of a pallet, a transponder can be placed into the fully protected interior of a subsequently welded pallet. You determine its placement. Traceability and identification independent on environmental influences. If required, we scan in the transponders and send you the containers and pallets together with the data file.

Miscellaneous

Case handles



Welded products in special dimensions



To fit	Model	See page
Various containers		
	various models	67

Remark
Containers can also be manufactured in small series production at various special dimensions.